

Lauris Ultrasonic Flow Meter Ordering Information

FF - A - B - C - D - E - F - G - H - I - J - K - L - M - N - O

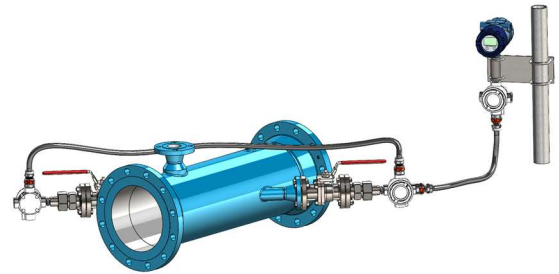
Item	Description
A	Number of Paths
1225	Single Path, 2 transducers
2225	Dual Path, 4 transducers
3225	Three Path, 6 transducers
4225	Four Path, 8 transducers
B	Arrangement (Appendix 1)
A	Regular inline, with isolation ball valves
E	Compact inline, with retraction tool (Note 5)
G	Insertion vertical, with isolation valves
U	Insertion, single port with isolation valve (Note 1)
C	Pipe size in Inches, Two Digits
D	Transmitter Mount (Note 2)
LM	Local (Integral) Mount Transmitter
10	Remote Mount, Cable Length 10m (33ft)
20	Remote Mount, Cable Length 20m (65ft)
30	Remote Mount, Cable Length 30m (100ft)
E	Spool & Flange Material (Note 3)
00	No Spool, On Pipe Installation
ST	Regular Carbon Steel, A105 / A106
LT	Low Temp Carbon Steel, A333 / A350LF2
SS	Stainless Steel Pipe and Flanges, SS 316
CM	Other Material and/or coating per IFC Datasheet
F	Pipe Schedule (corresponding to pipe dia.)
STD	Schedule Standard
010	Schedule 10
040	Schedule 40
080	Schedule 80
XH	Schedule Extra Strong
160	Schedule 160
G	Spool Flange Rating
1	ANSI 150
2	ANSI 300
3	ANSI 600
4	ANSI 900
5	ANSI 1500
H	Spool Flange Type
RF	Raised Face
FF	Flat Face
SO	Slip On

Item	Description
I	Process Connection, Transducer Port
N10	NPT 1"
N15	NPT 1.5"
F15	Flanged 1.5" RF
F20	Flanged 2" RF
F30	Flanged 3" RF
J	Power Supply
A	24 VDC
B	120-250 VAC
K	Transducer Type
TS	Material: SS316
TL	Material: SS316L
TT	Material: Titanium
TH	Material: Hastelloy
TM	Material: Monel
L	Maximum Process Pressure, in bar
M	Maximum Process Temperature
1	135C
2	250C
3	600C
N	Pressure Transmitter (Note 4 and 6)
PON00	By Others, remote mount, no PT port on spool
PON05	By Others, on spool mount, include 1/2" NPT Port
PON10	By Others, on spool mount, include 1" NPT Port
P1N00	By Lauris, remote mount, shipped loose
P1N05	By Lauris, 1/2" NPT port, installed and wired
P1N10	By Lauris, 1" NPT port, PT installed and wired
P1F10	By Lauris, 1" Flanged port, PT installed and wired
P1F15	By Lauris, 1.5" Flanged port, PT installed and wired
P1F20	By Lauris, 2" Flanged port, PT installed and wired
P1CC	By Lauris, custom PT connection
O	Temperature Transmitter (Note 4 and 6)
T0F00	By Others, remote mount, no TT port on spool
T0N05	By Others, on spool mount, include 1/2" NPT Port
T0F05	By Others, on spool mount, include 1/2" FLG Port
T0F10	By Others, on spool mount, include 1" FLG Port
T0F15	By Others, on spool mount, include 1.5" FLG Port
T0F20	By Others, on spool mount, include 2" FLG Port
T1N00	By Lauris, remote mount, shipped loose
T1N01	By Lauris, 1/2" NPT port, installed and wired
T1F05	By Lauris, 1/2" Flanged port, installed and wired
T1F10	By Lauris, 1" Flanged port, installed and wired
T1F15	By Lauris, 1.5" Flanged port, installed and wired
T1F20	By Lauris, 2" Flanged port, installed and wired
T1CC	By Lauris, custom TT connection

Example:

FF1225-A-10-30-ST-STD-1-RF-F15-A-TT-10-2-P0N05-T0F20

- Inline regular single path flow meter
- Spool size is 10"
- Remote Mounted Transmitter with 30m coaxial cable
- Spool Body from A106 Carbon Steel, w/ A105 Flanges
- Pipe Schedule is Standard
- Spool Flange Rating is ANSI CL150
- Spool Flange Type is Raised Face
- 1.5" Flanged CL150 transducer ports
- 24VDC power supply
- Titanium Transducers
- 10bar Maximum Process Pressure
- 250C Maximum Process Temperature
- Pressure transmitter by Others, ½" NPT on spool port
- Temperature transmitter by Others, 2" flanged on spool port


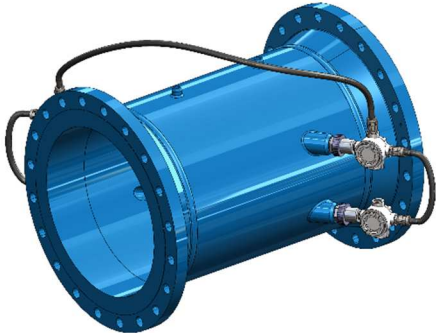



(product rendering for reference only)

Notes:

- 1) Insertion single port FF1225-U flow meter can be ordered in single path or dual path configuration.
- 2) Maximum coaxial cable length for remote mounted transmitter is 30m (100ft).
- 3) Standard prep and coating for ST and LT spool materials is blasting per SSPC-SP10 and powder coating in RAL-5005. Please contact your Lauris representative for other prep and coating options.
- 4) Unless otherwise specified the following are the Lauris standard Pressure and Temperature Transmitters:
 - a. Pressure Transmitter (P1N00 and P1N05)– ½ " NPT Port Noshok 621 Series Explosion Proof (P/N 621-30/100-1-1-8-6).
 - b. Temperature Transmitter (T1N00 and T1N05) – Aircom ½" NPT Thermowell, 316L Tapered Stem, RTD Assembly 3-wire single element, CSA RTD 2/3/4-wire transmitter (4-20mA Output).
- 5) Only one retraction spool is included per order. Additional retraction tools can be provided upon request.
- 6) Flanged ports are 150#, RF. For flanged PT ports a CL150 SS isolation ball valve is included.

Appendix 1: Typical Arrangements

A	Regular inline, single path with isolation ball valves	
E	Compact inline, with retraction tool. High pressure application.	
G	Vertical, single path, with isolation valves. For on-pipe installation where the process lines are close together.	
U	Insertion, single port with isolation valve	